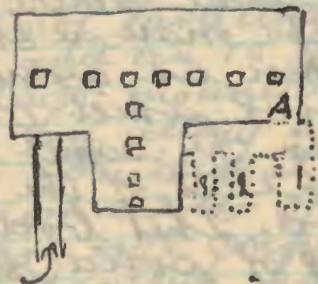


knocked about but where they have not been touched, as at the ears they are extra ordinarily clear cut and correct. Down an inclined path, and a few yards to the south of the sphinx is the "Temple of the Sphinx" which has been covered with sand but the sand has now been completely removed from it, it is something like this shape



The entrance is down the sloping passage marked with an arrow. The big main chamber is

open to the sky and the pillars which run down the centre of it and down the centre of the small chamber which branches off it - in reality one chamber altogether - are square and of red granite. There are no hieroglyphics anywhere on the pillars or walls the pillars being as smooth and polished as any ever were, at A there is a low doorway - which at one time was closed with a door - which opens into a low covered passage the one marked 1 is roofed and floored and walled with alabaster. The guide lights a piece of magnesium wire and it ~~shows~~ the alabaster reflects the light in a white glow in which